



SAGWARA



30
1:30

| SNO. | PARTICULAR | AREA IN SQM | REMARKS | COLOR |
|------|-----------------|-------------|----------------------------|-------|
| (1) | RESIDENTIAL | | | |
| | PLACED IN ALLOT | 14220 SQM | H.C. - 07% M.C.D. - 07% | |
| (2) | COMMERCIAL | | | |
| | PLACED IN ALLOT | 7000 SQM | | |
| | PLACED IN ALLOT | 1300.00 SQM | | |
| (3) | INSTITUTIONAL | | | |
| | AVAILABLE | 12120 SQM | EDUCATIONAL | |
| | | 19640 SQM | HEALTH CENTER | |
| | | 19640 SQM | HEALTH CENTER | |

LAY OUT PLAN OF SAGWARA SCHEME, DISTT-DUNGARPUR

भावातीर मंडळ
राजस्थान भावातीर मंडळ

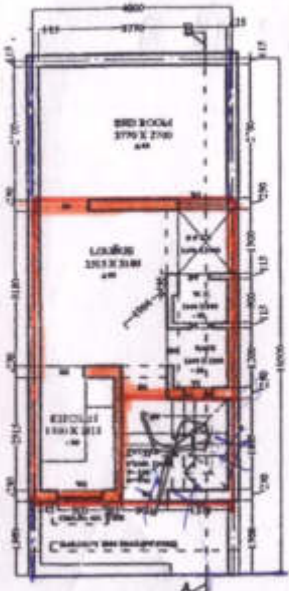
RAJASTHAN HOUSING BOARD

- EWS (Gharonda) 3.75m x 8.00m = 10 No.
- EWS - 4.00m x 10.50m = 37 No.
- MIG - 6.00m x 15.00m = 07 No.
- MIG - 8.00m x 15.00m = 11 No.

- MIG - 6.00m x 15.00m = 29 No.
- MIG-A 8.00m x 15.00m = 17 No.
- MIG-B - 9.00m x 18.00m = 22 No.
- MIG - 11.15m x 21.00m = 12 No.

R.H.B. Scheme SAGWARA

EWS = 4.0 x 10.50



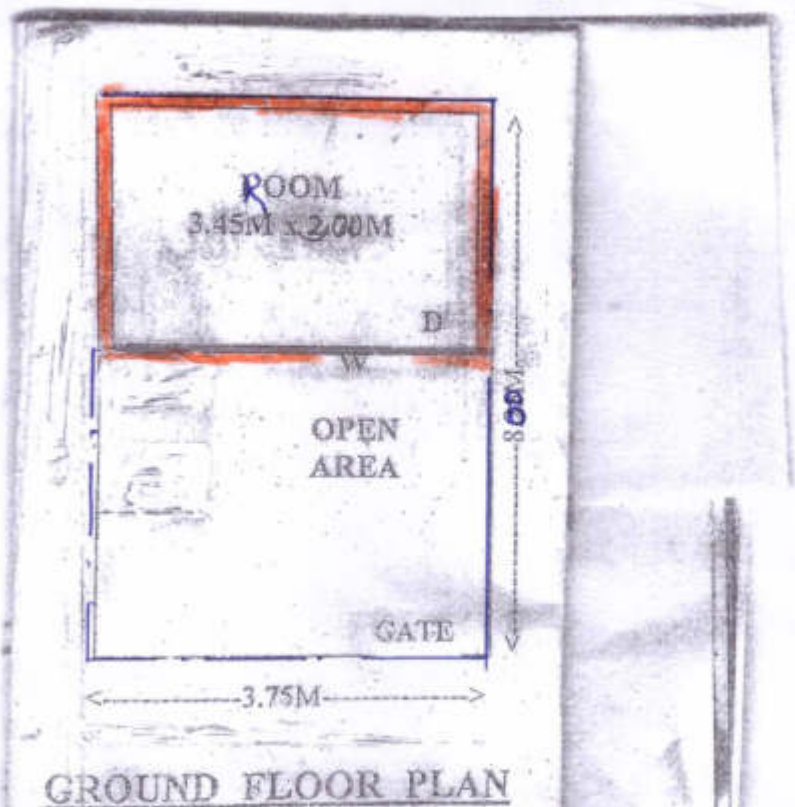
GROUND FLOOR PLAN

P.A. = 18.45 sqm.



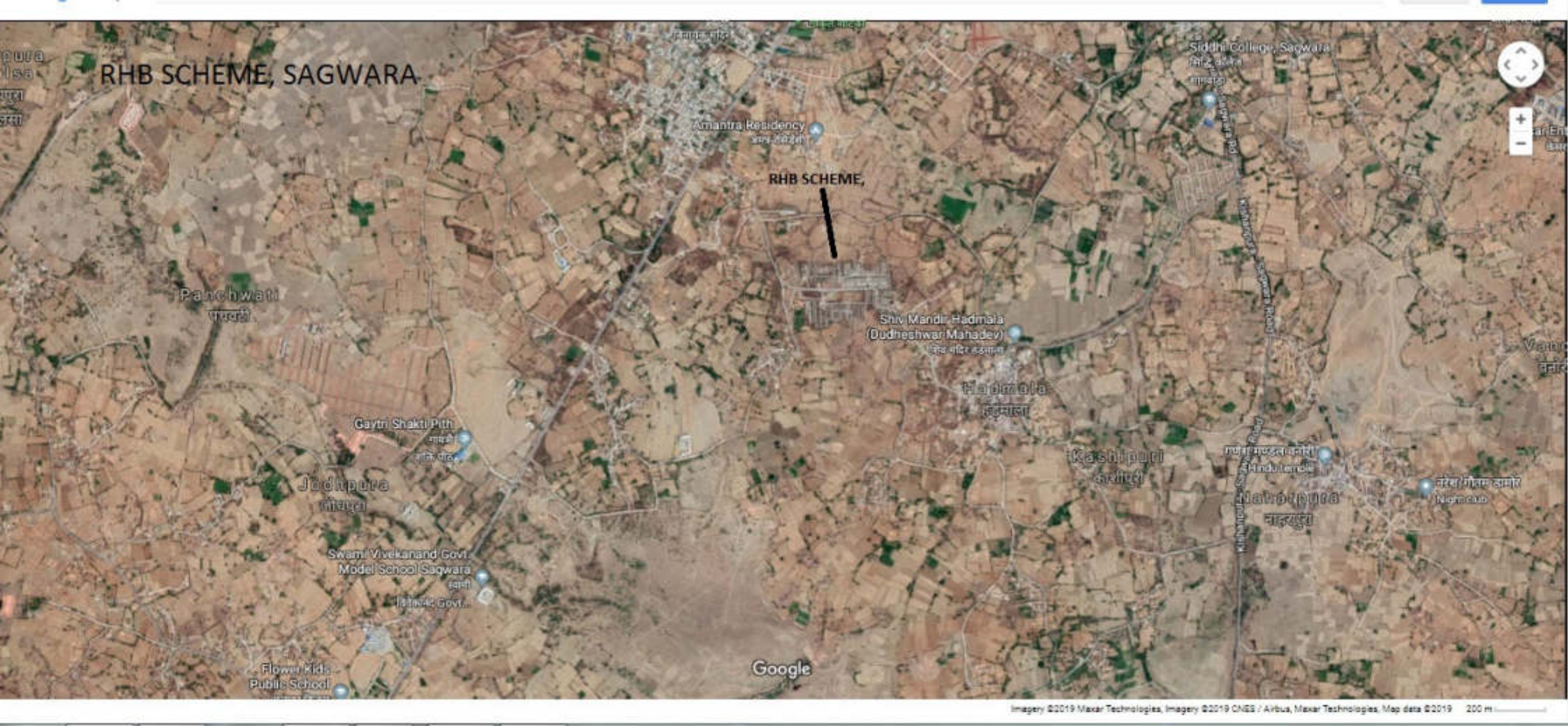
Constructed Area

R.H.B SCHEME, SAGWARA
EWS (Gharonda) (3.75x8.00M)



plinth Area = 11.20 sqm

 Constructed Area



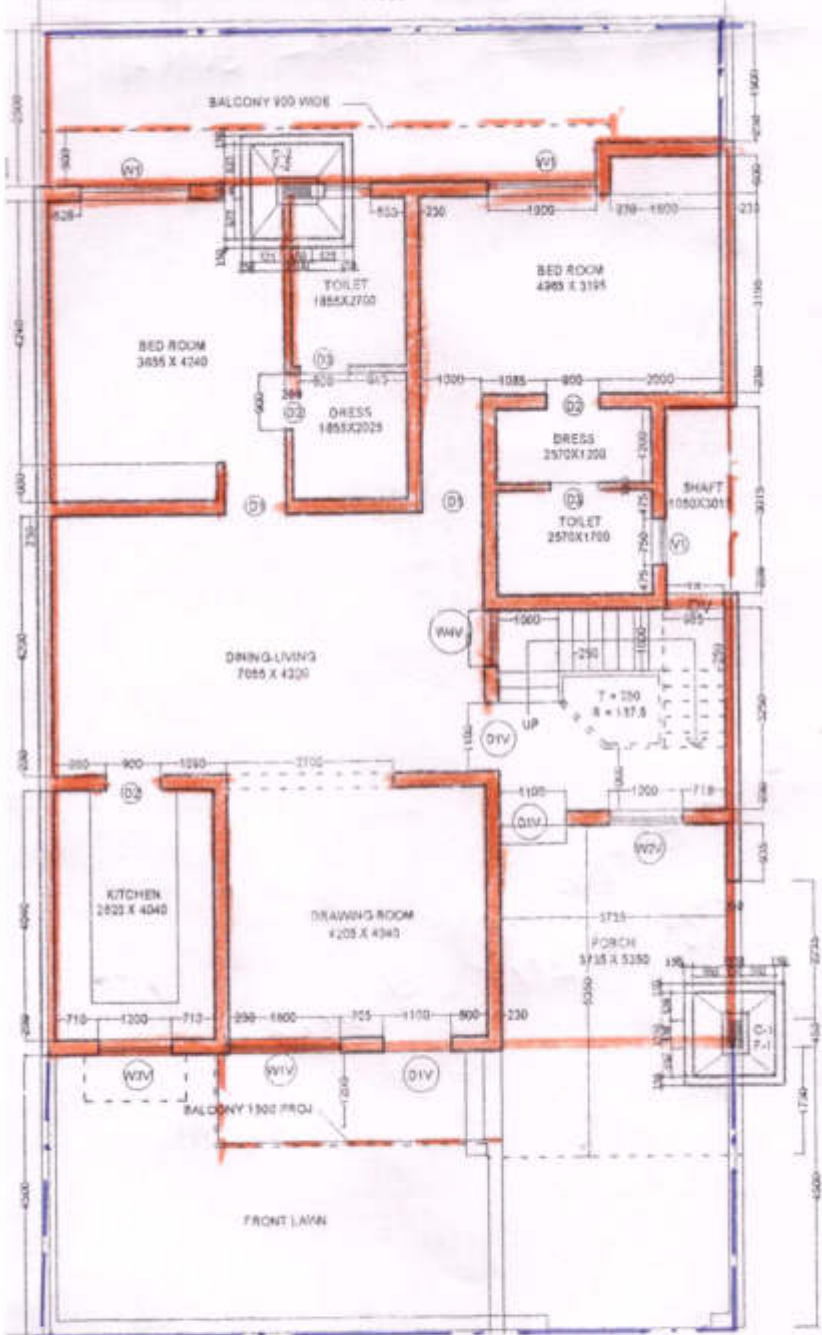
RHB SCHEME, SAGWARA

RHB SCHEME,

Google

RHB Scheme, SAGWADA

11250



GROUND FLOOR PLAN

HIG = 11.25 X 21.00 fhr

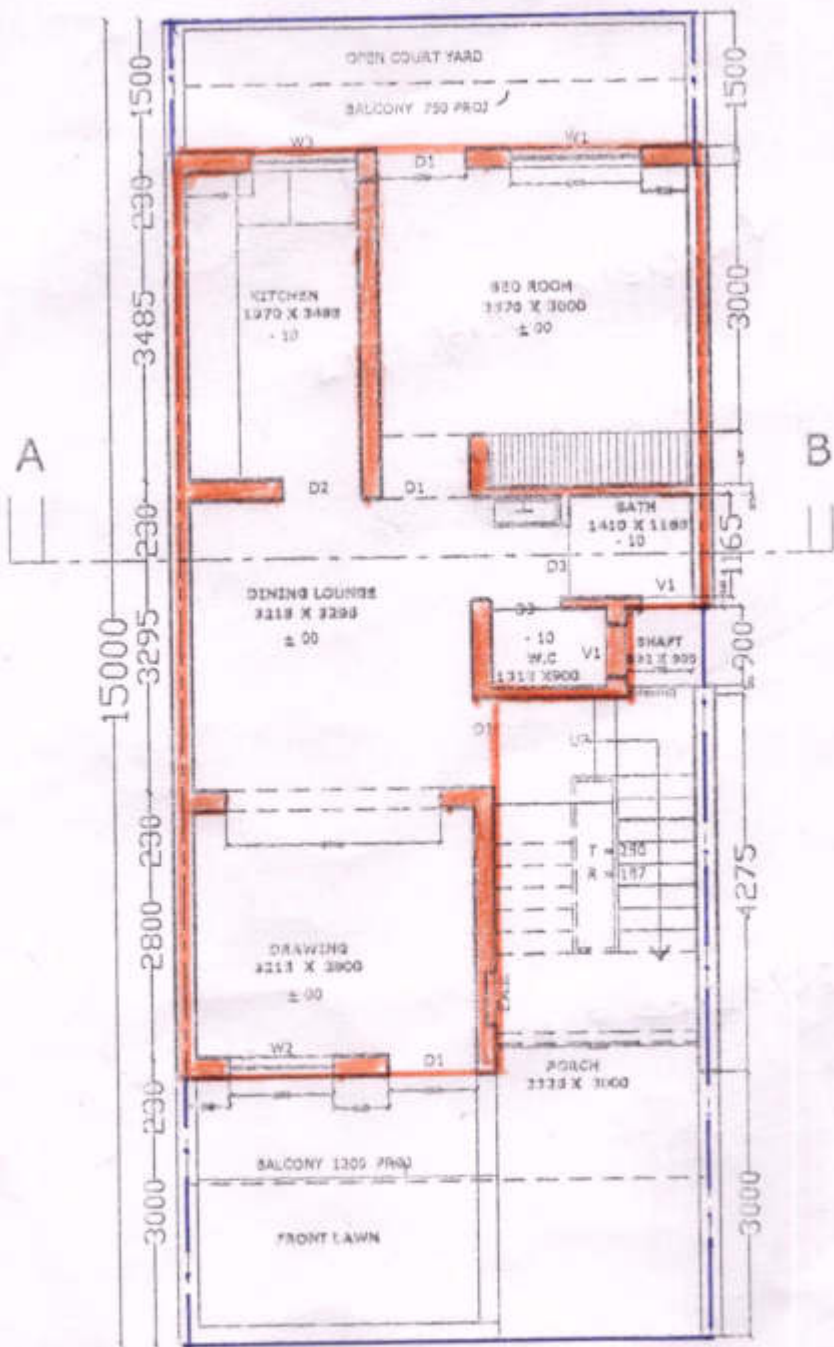
P.A. = 157.20 fhr



Constructed Area

RHB, Scheme, SAGWARA

6000



GROUND FLOOR PLAN

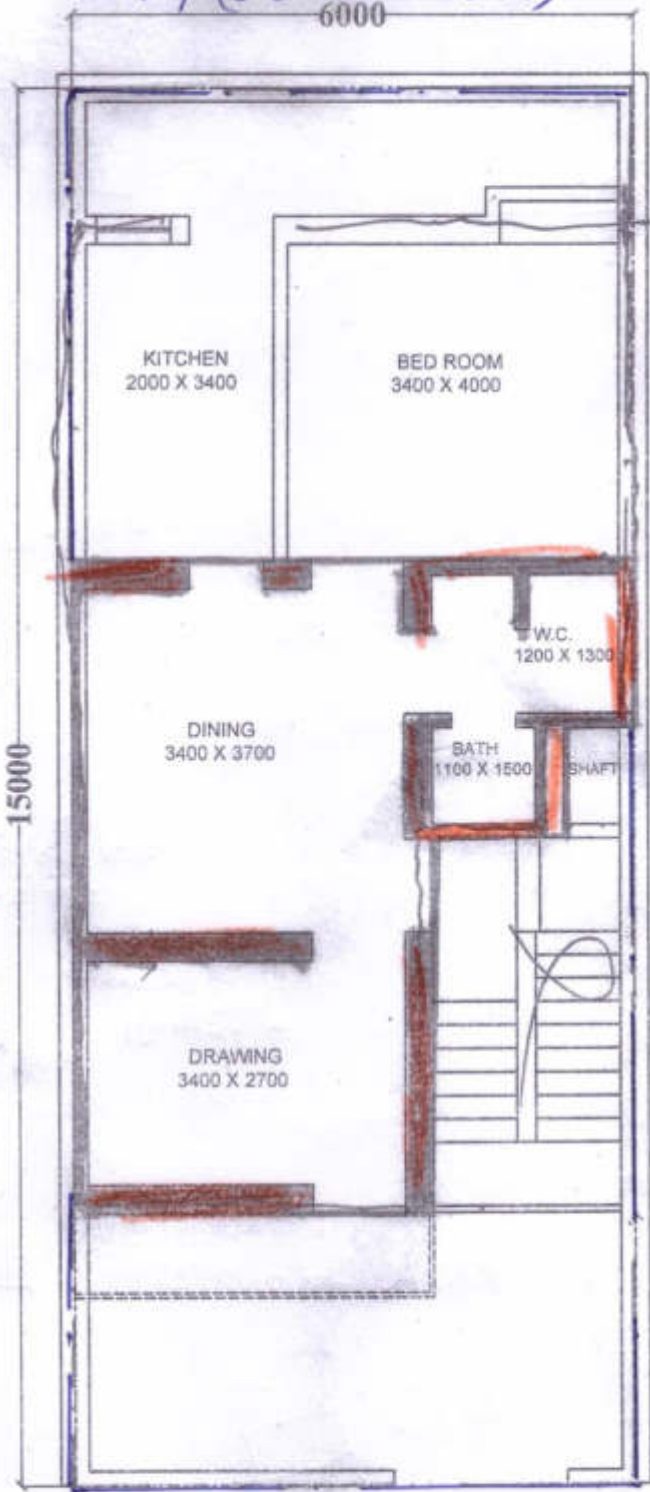
$L/G = (6.00 \times 15.00) m$

$P.A. = 68.05 sqm$



Constructed Area

R.H.B. Scheme, SAGWARA
LIG = (6.00 X 15.00m)



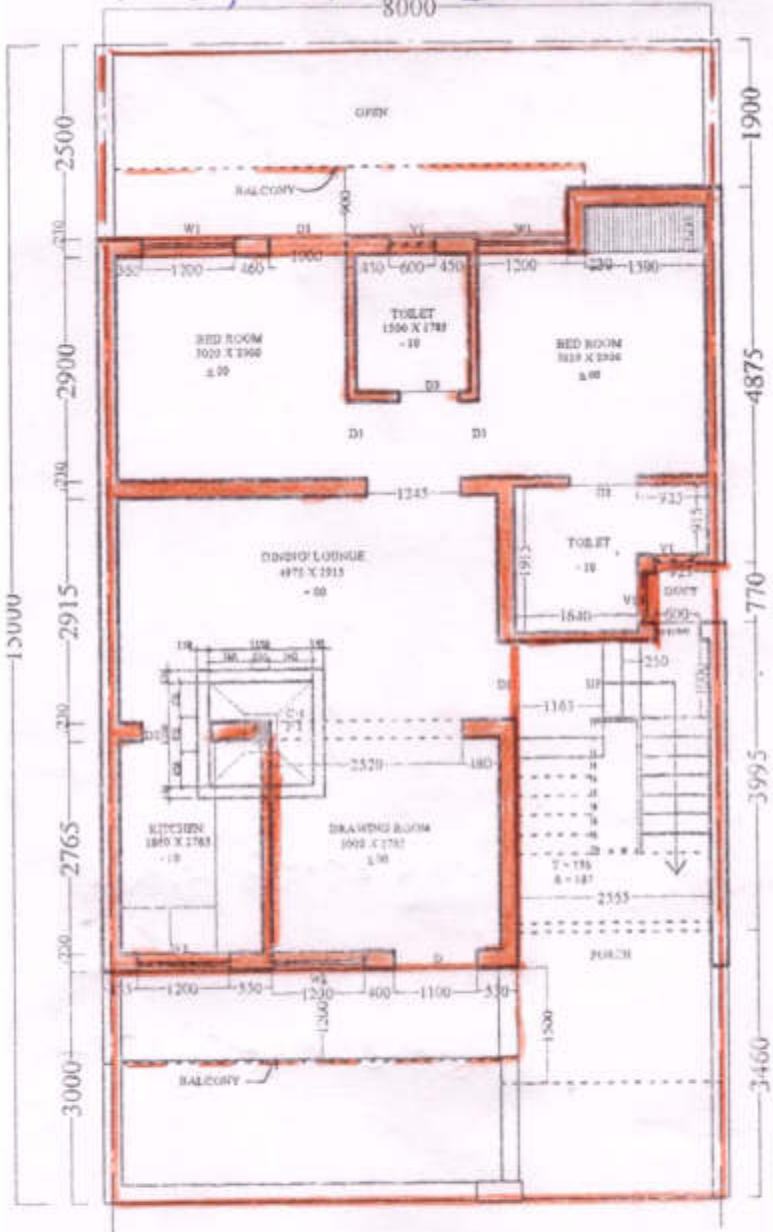
R O A D

P. A. = 35.34 sqm
CONST. CARRIED OUT BY R.H.B.



RHB, Schemp, SAGAWA

8000



GROUND FLOOR PLAN

MIG-A = (8.00 x 15.00m)

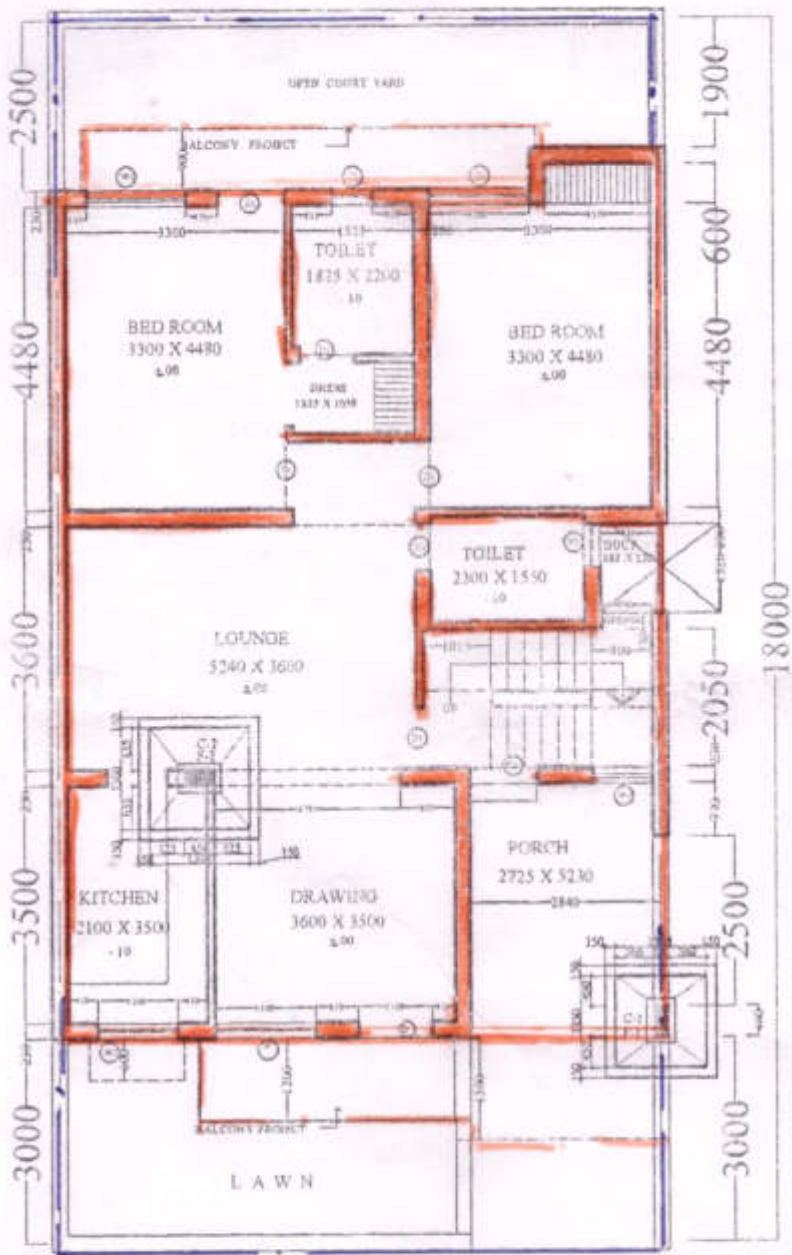
P.A. = 84.4) gnr



Constructed Area

RHB Scheme, SATWARA

9000



GROUND FLOOR PLAN

$$M/G-B = (9.00m \times 18.00m)$$

$$P.A. = 115.20 \text{ sgr}$$



Constructed Area